



Giles Coppice, SE19 | £550,000

02087028111

dulwichvillage@pedderproperty.com

pedder
We live local



In General

- Mid century town house
- Three bedrooms
- Large main reception room
- Separate kitchen
- Internal garage
- Popular location
- Sold chain free

In Detail

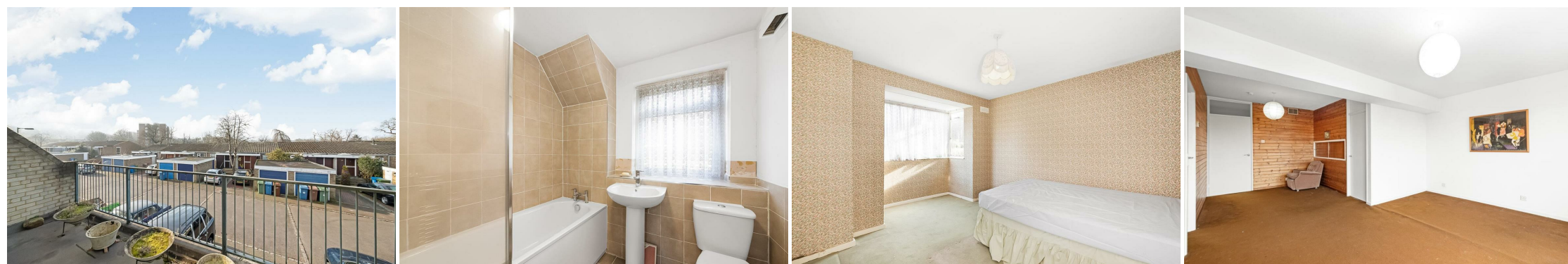
A modern three storey townhouse for sale situated in this very popular residential development in Giles Coppice, SE19 on the border of Dulwich and Crystal Palace.

The property offers spacious and flexible accommodation over three floors comprising three bedrooms, bathroom, large main reception room, kitchen and downstairs cloakroom and internal garage. From the lounge there is access to a delightful terrace.

Giles Coppice is popular residential cul-de-sac well located for access to nearby West Dulwich, Dulwich Village and Crystal Palace with their numerous parks, outstanding schools, numerous shops, cafes and restaurants. Excellent rail links to central London are from nearby Sydenham Hill (London Victoria/London Blackfriars) and Gipsy Hill (London Bridge/London Victoria).

The property will require modernisation but offer an incoming buyer an ideal opportunity to create their ideal family home. Offered with no onward chain.

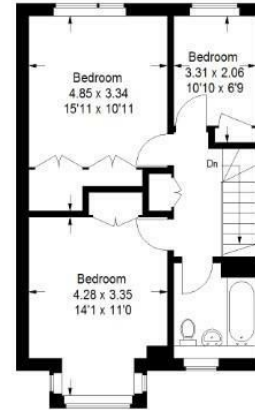
EPC: E | Council Tax Band: E



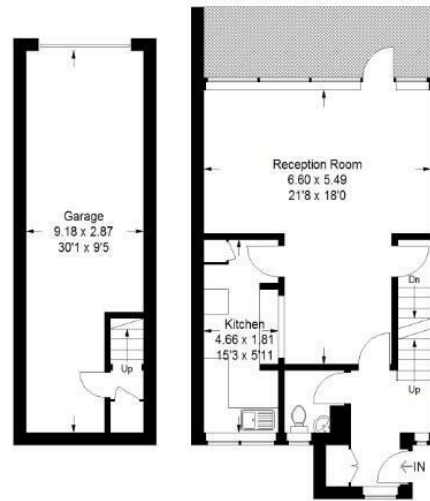
Floorplan

Giles Coppice, SE19

Approximate Gross Internal Area
(Including Garage)
121.6 sq m / 1308 sq ft



First Floor



Basement

Ground Floor

Copyright www.pedderproperty.com © 2025
These plans are for representation purposes only as defined by RICS - Code of Measuring Practice. Not drawn to Scale. Windows and door openings are approximate. Please check all dimensions, shapes and compass bearings before making any decisions reliant upon them.

Energy Efficiency Rating		Current	Potential
Very energy efficient - lower running costs			
102 plus) A			81
76(41) B			
69(40) C			
55(48) D			
39(54) E		48	
21(38) F			
1(20) G			
Not energy efficient - higher running costs			
England & Wales		EU Directive 2002/91/EC	

Pedder Property Ltd trading as Pedder for themselves and for the vendor/landlord of this property whose agents they are, give notice that (1) these particulars do not constitute any part of an offer or contract, (2) all statements contained within these particulars are made without responsibility on the part of Pedder or the vendor/landlord, (3) whilst made in good faith, none of the statements contained within these particulars are to be relied upon as a statement of representation or fact, (4) any intending purchaser/tenant must satisfy him/herself by inspection or otherwise as to the correctness of each of the statements contained within these particulars, (5) the vendor/landlord does not make or give either Pedder or any person in their employment any authority to make or give representation or warranty whatsoever in relation to this property.